

Tollaust Pty Ltd - Lane Cove Tunnel

CO In Tunnel Air Quality Monitoring Validated Data Report

1 August 2023 to 31 August 2023

Ref: DR.202308.LCT

Issue Date: 7 September 2023

Report prepared by: Tim Allfrey

Norditech Pty Ltd
Unit 2/87 Station Road
Seven Hills NSW 2147

1300 572 822

info@norditech.com.au

www.norditech.com.au

Document Control

Revision	Date	Details	Prepared By	Approved By
0	7/09/2023	Final	TA	BN

Prepared by



Tim Allfrey
7 September 2023

Approved by



Bruno Nourdine
7 September 2023

Distribution

Format	Recipient	Details
PDF	Liam O'Grady	logrady@transurban.com
PDF	Matt Sullivan	MSullivan@transurban.com
PDF	Scott Tinsley	STinsley@transurban.com
PDF	James Kao	JKao@transurban.com

Table of Contents

1	Executive Summary.....	3
1.1	Compliance to limits	3
2	Introduction.....	4
3	Compliance Limits	4
4	Explanation of Monitoring	5
4.1	Methodology.....	5
4.2	Monitoring Locations	6
4.3	Data Collection.....	8
4.4	Data Validation.....	8
4.5	Reporting.....	8
5	Instrumentation units and accuracy	9
6	Results	10
6.1	Data Availability.....	10
6.2	Exceedances.....	11
6.3	Graphical Representations	12
6.3.1	Monthly CO maximum 3 minute rolling averages.....	12
6.3.2	Monthly CO maximum 15 minute rolling averages.....	13
6.3.3	Monthly CO maximum 30 minute rolling averages.....	14
6.3.4	Three Monthly Trend CO maximum 3 minute rolling averages	15
6.3.5	Three Monthly Trend CO maximum 15 minute rolling averages	16
6.3.6	Three Monthly Trend CO maximum 30 minute rolling averages	17
7	Glossary	18

Figures

Figure 1:	Lane Cove Tunnel CO in tunnel monitor locations	7
Figure 2:	Monthly CO maximum hourly 3 minute rolling averages	12
Figure 3:	Monthly CO maximum hourly 15 minute rolling averages	13
Figure 4:	Monthly CO maximum hourly 30 minute rolling averages	14
Figure 5:	3 Monthly CO maximum hourly 3 minute rolling averages	15
Figure 6:	3 Monthly CO maximum hourly 15 minute rolling averages	16
Figure 7:	3 Monthly CO maximum hourly 30 minute rolling averages	17

Tables

Table 1:	MCoA Compliance Goals.....	4
Table 2:	Location and identification of CO in tunnel monitors	6
Table 3:	Instrument details and calibration dates.....	9
Table 4:	In tunnel CO data availability	10
Table 5:	Exceedances of MCoA Goals	11

1 Executive Summary

The Lane Cove Tunnel runs for 3.6km between North Ryde and Artarmon, linking the M2 Motorway and the Gore Hill Freeway and forms part of Sydney's motorway network. The tunnel commenced operation in March 2007.

To ensure that carbon monoxide levels within the tunnel are kept within acceptable levels, a network of 28 air quality sensors are installed in strategic locations throughout the tunnel. Data from these sensors are recorded, validated and reported on a monthly basis.

This report presents the monthly validated data for August 2023 to Tollaustr Pty Ltd for the Lane Cove Tunnel.

1.1 Compliance to limits

The Minister's Conditions of Approval (MCoA) designates limits to which air quality inside the tunnel must meet. These limits relate to the maximum concentration of carbon monoxide in the air inside the tunnel.

There were no measured exceedances of the carbon monoxide limits during the reporting period of August 2023

For further information relating to exceedance reporting please refer to sections Compliance Limits, and Exceedances.

2 Introduction

Norditech were contracted by Tollaust Pty Ltd in December 2018 to provide in tunnel data validation and reporting services for Lane Cove Tunnel.

Addresses of relevant parties:

Norditech Pty Ltd
 2/87 Station Rd
 Seven Hills NSW 2147

Tollaust Pty Ltd
 5 Sirius Rd
 Lane Cove West NSW 2066

This report presents the validated in tunnel CO data for August 2023.

- Describes air quality measurements.
- Reports any readings above the LCT Limits.
- Compares monitoring results.
- Has been quality assured.

3 Compliance Limits

Air quality goals provided are provided in Condition 160 and 161 of the Minister's Conditions of Approval issued by the Director-General for the Lane Cove Tunnel project. The air quality goals are shown in the table below.

Parameter	Averaging Period	Goal Limit	Units	Applicable MCoA
Carbon Monoxide (CO)	3 minute rolling average	200	ppm	MCoA 161
	15 minute rolling average	87	ppm	MCoA 160
	30 minute rolling average	50	ppm	MCoA 160

Table 1: MCoA Compliance Goals

4 Explanation of Monitoring

4.1 Methodology

Carbon monoxide (CO) levels are measured inside the tunnel using a network of 28 separate CO monitors attached to the walls of both eastbound and westbound tunnels. The monitors measure CO using an analytical method known as non-dispersive infra red absorption with gas filter correlation. Basically, this involves projecting an infra-red beam across a 3 metre section of the tunnel and measuring the amount of infra-red light absorbed by CO molecules in the path of the beam. The quantity of infrared light absorbed is proportional to the concentration of CO in the path of the beam. The monitors used were specially designed for use in road tunnels where access for routine essential maintenance is restricted by the need to minimise traffic disruption. Similar monitors are widely used in other road tunnels in Australia and worldwide.

This method of analysis is similar to the standard method AM-6 outlined in “NSW EPA 2001, Approved Methods for Sampling and Analysis of Pollutants in New South Wales.” However the method differs from the standard principally by the use of the open beam type instrument as described above in place of a closed analytical cell and sample delivery pump as typically used in ambient air monitoring stations. This deviation from the standard method has been approved by the Department of Planning on the advice of an independent consultant with specialist expertise in the field of air quality monitoring.

The number and locations of the CO monitors has been selected using computer generated modelling to provide a representative profile of CO levels inside the tunnel.

The instruments being used for in tunnel CO monitoring are Codel TunnelCraft III Open Path Infra-red gas cell correlation instruments.

4.2 Monitoring Locations

The 28 CO monitors are located strategically in portal and tunnel wall locations. Specific monitor locations and identifiers are detailed in the table and schematic Figure 1 below.

Monitoring Location	Equipment Identification
A	AQS101
B	AQS501
C	AQS502
F	AQS503
G	ACO101
H	AQS504
I	AQS505
J	AQS102
M	ACO102
N	ACO501
Q	AQS103
R	AQS506
S	ACO103
T	ACO502
U	AQS104
V	AQS507
W	ACO401
X	ACO104
Y	AQS401
Z	AQS402
AA	AQS105
AB	ACO801
AC	AQS403
AG	AQS106
AH	ACO503
AI	AQS801
AJ	AQS107
AK	AQS508

Portal Monitor	
Tunnel Wall Monitor	

Table 2: Location and identification of CO in tunnel monitors

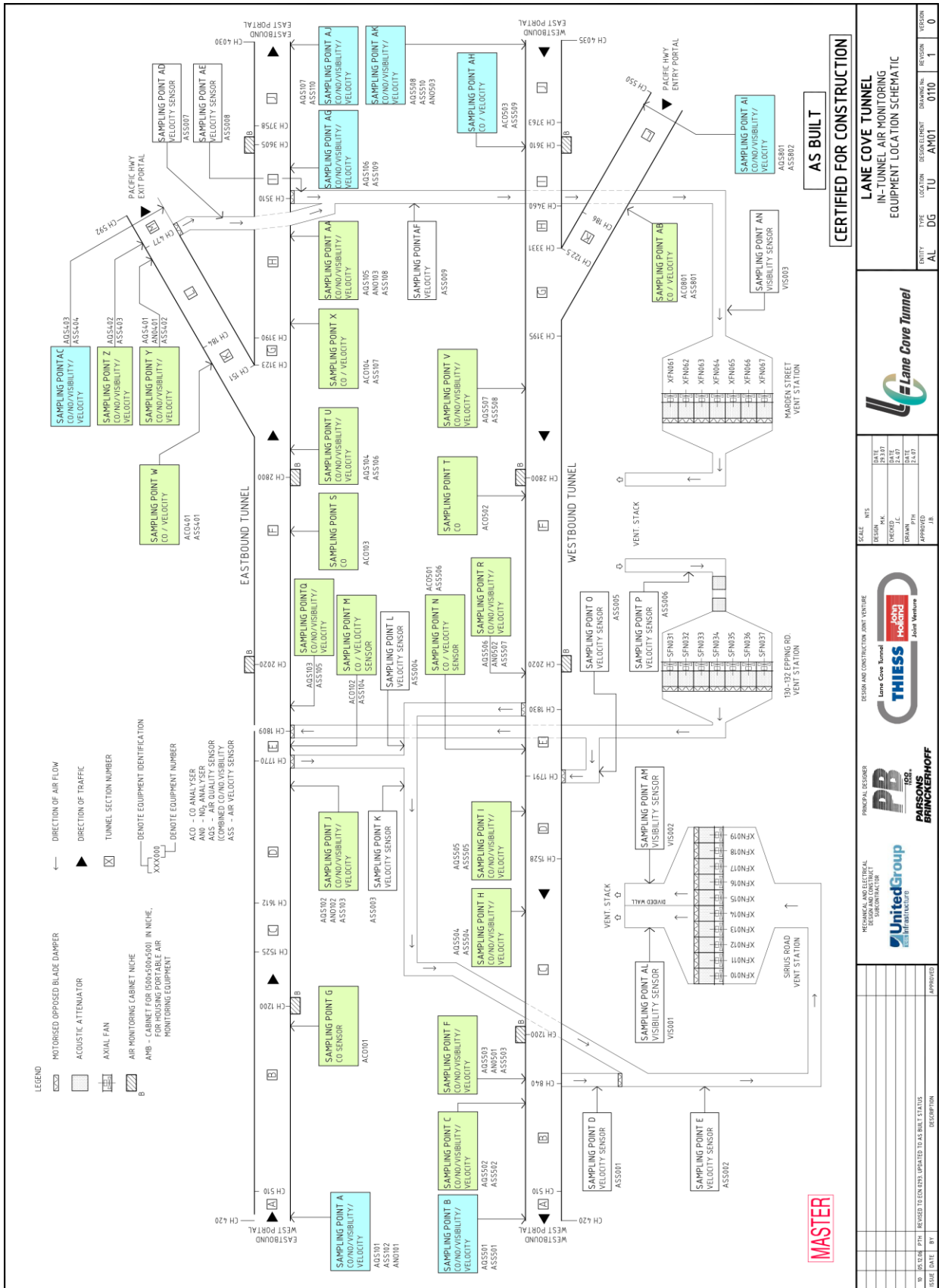


Figure 1: Lane Cove Tunnel CO in tunnel monitoring locations

4.3 Data Collection

Data is collected on the Lane Cove Tunnel PMCS, and is provided to Norditech on a weekly basis via email. Data is then imported into a SQL database. Data is logged in 1 minute average periods. All calculations are based on this 1 minute average data.

4.4 Data Validation

Data validation is performed as per Norditech’s data validation procedure. The data validation process identifies any data that is deemed not to be valid. This data is flagged as invalid in the database and is removed from the reported data.

Data may be deemed invalid for several reasons, including but not limited to:

- Instrument fault
- Instrument calibration out of tolerance
- Maintenance activities

Initial visual inspection of data is performed by inspection of graphs to identify any anomalies in the data set.

Site visit logs and maintenance and calibration certificates are cross referenced to the data set and any data affected by maintenance activities are flagged.

Instrument drift and calibration tolerances are checked and data flagged in the database as necessary.

4.5 Reporting

This report presents the validated in tunnel CO data for August 2023.

All calculations are based on 1 minute average data and are reported as ‘end time’. IE the average data for 01:03 is the data from 01:00 through to 01:03.

Data availability refers to the amount of available data for the reporting period. Data availability is calculated using the following formula:

$$\text{Data availability} = \frac{\text{sum of available data points}}{\text{sum of possible data points}} * 100$$

Where:

- Sum of available data points is the number of validated 3 minute rolling average data points for the reporting period
- Sum of possible data points is the number of theoretically available data points for the reporting period

Data is presented in the format of an Excel workbook named “202308 LCT In Tunnel Validated CO data.xlsx”.

The workbook consists of the following sheets:

1. Cover
2. Max Single Point 3, 15 and 30m averages
3. Data Validation

5 Instrumentation units and accuracy

Instrumentation details are provided in the table below

Location ID	Last Calibration Date	Units	Resolution	Uncertainty	Measurement Range
East Bound		ppm	0.1 ppm	± 1.0 ppm or 2% of span value	0 ppm to 200 ppm
AQS101	25/05/2023				
AQS102	22/08/2023				
AQS103	22/08/2023				
AQS104	23/08/2023				
AQS105	25/05/2023				
AQS106	19/04/2023				
AQS107	26/05/2023				
AQS401	26/05/2023				
AQS402	26/05/2023				
AQS403	26/05/2023				
ACO101	21/08/2023				
ACO102	20/04/2023				
ACO103	22/08/2023				
ACO104	25/05/2023				
ACO401	26/05/2023				
West Bound					
AQS501	23/08/2023				
AQS502	24/08/2023				
AQS503	24/08/2023				
AQS504	7/03/2023				
AQS505	7/03/2023				
AQS506	25/05/2023				
AQS507	26/05/2023				
AQS508	24/11/2022				
AQS801	26/05/2023				
ACO501	10/03/2022				
ACO502	25/05/2023				
ACO503	25/05/2023				
ACO801	26/05/2023				

Table 3: Instrument details and calibration dates

6 Results

6.1 Data Availability

Data availability for the in tunnel CO sensors are provided in the table below. Locations with data availability less than 75% are indicated in red italics. Please refer to the Data Validation Table in the accompanying data file for further details regarding missing or removed data.

Data availability for the reporting period is summarized below:

Lane Cove Tunnel In Tunnel CO Data Availability August 2023			
Monitoring Location	Equipment Identification	Data Availability (%)	Comment
East Bound			
A	AQS101	<i>21.8</i>	Instrument recalibrated 24/08/2023
J	AQS102	95.7	
Q	AQS103	<i>28.2</i>	Calibration out of tolerance
U	AQS104	<i>26.1</i>	Calibration out of tolerance
AA	AQS105	95.7	
AG	AQS106	95.3	
AJ	AQS107	95.7	
Y	AQS401	95.7	
Z	AQS402	95.7	
AC	AQS403	<i>0.0</i>	Device marked out of service by Control due to reported Visibility spikes, raw data requested to be sent by ITSOPs for trend analysis before removing device for further testing
G	ACO101	95.7	
M	ACO102	95.7	
S	ACO103	91.0	
X	ACO104	95.7	
W	ACO401	95.7	
West Bound			
B	AQS501	95.7	
C	AQS502	95.7	
F	AQS503	95.4	
H	AQS504	<i>0.0</i>	Instrument fault from 29/07/2023. Instrument removed for service.
I	AQS505	<i>26.1</i>	Calibration out of tolerance
R	AQS506	95.7	
V	AQS507	95.7	
AK	AQS508	<i>0.0</i>	Vehicle strike on instrument - new instrument to be installed during October PD closure
AI	AQS801	<i>0.0</i>	Data is unrealistic due to deterioration of detector affecting results at lower levels. Instrument checks pass as expected.
N	ACO501	<i>0.0</i>	Instrument requires replacement, currently inoperable - new instrument to be installed during October PD closure.
T	ACO502	95.7	
AH	ACO503	95.7	
AB	ACO801	<i>0.0</i>	Data is unrealistic due to deterioration of detector affecting results at lower levels. Instrument checks pass as expected.

Table 4: In tunnel CO data availability

6.2 Exceedances

If any instances of the in tunnel CO levels exceeded the MCoA goals during the reporting period, they will be presented in the table below

Lane Cove Tunnel In Tunnel CO Exceedances August 2023						
Parameter	Averaging Period	Goal Limit	Units	Value of exceedance	Date and time of exceedance	Station
Carbon Monoxide (CO)	3 minute rolling average	200	ppm	-	-	-
	15 minute rolling average	87	ppm	-	-	-
	30 minute rolling average	50	ppm	-	-	-

Table 5: Exceedances of MCoA Goals

6.3 Graphical Representations

The graphical representations are constructed from 1 minute average data, re-averaged to the 3 minute, 15 minute, and 30 minute rolling averages.

6.3.1 Monthly CO maximum 3 minute rolling averages

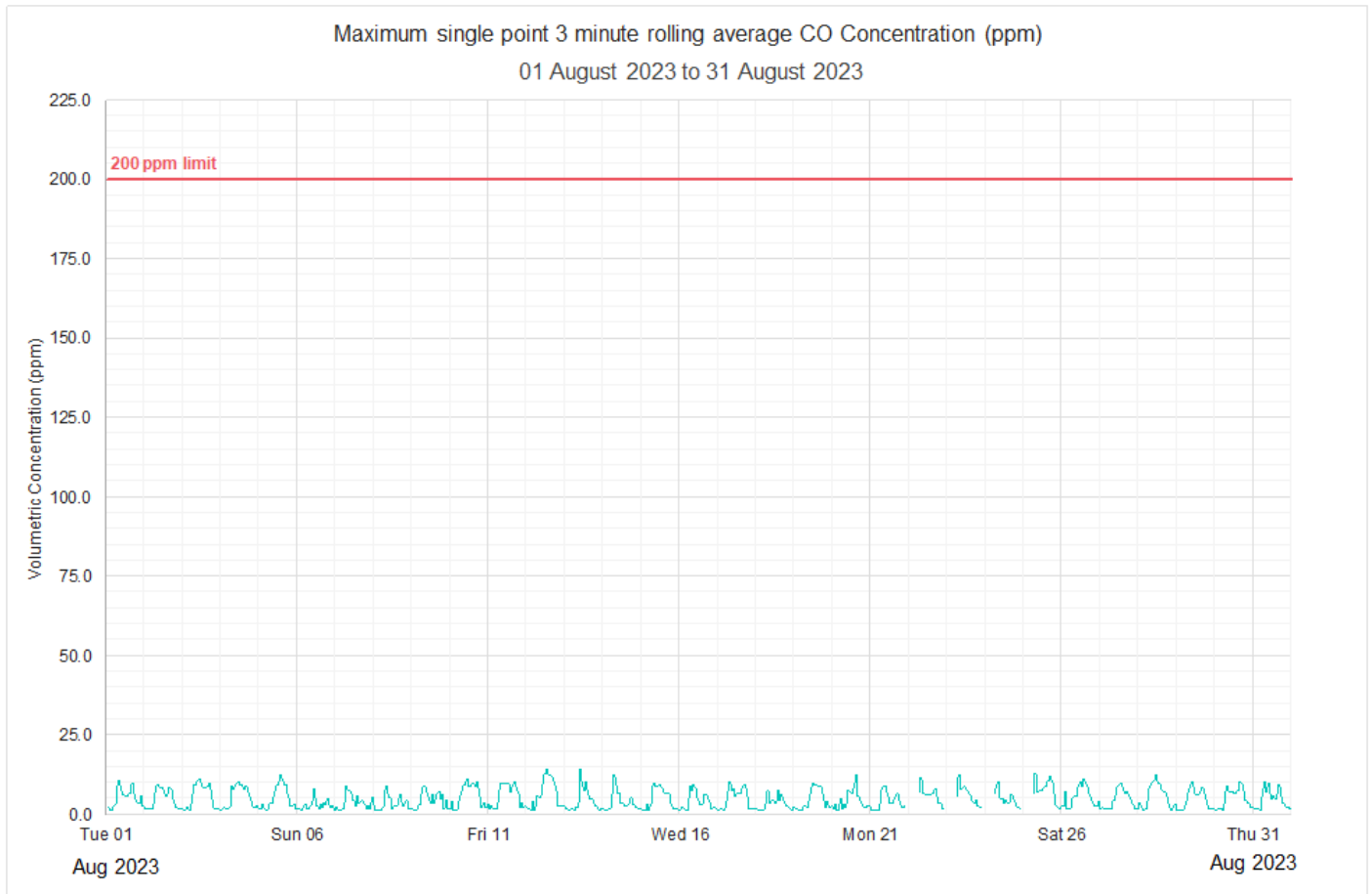


Figure 2: Monthly CO maximum hourly 3 minute rolling averages

6.3.2 Monthly CO maximum 15 minute rolling averages

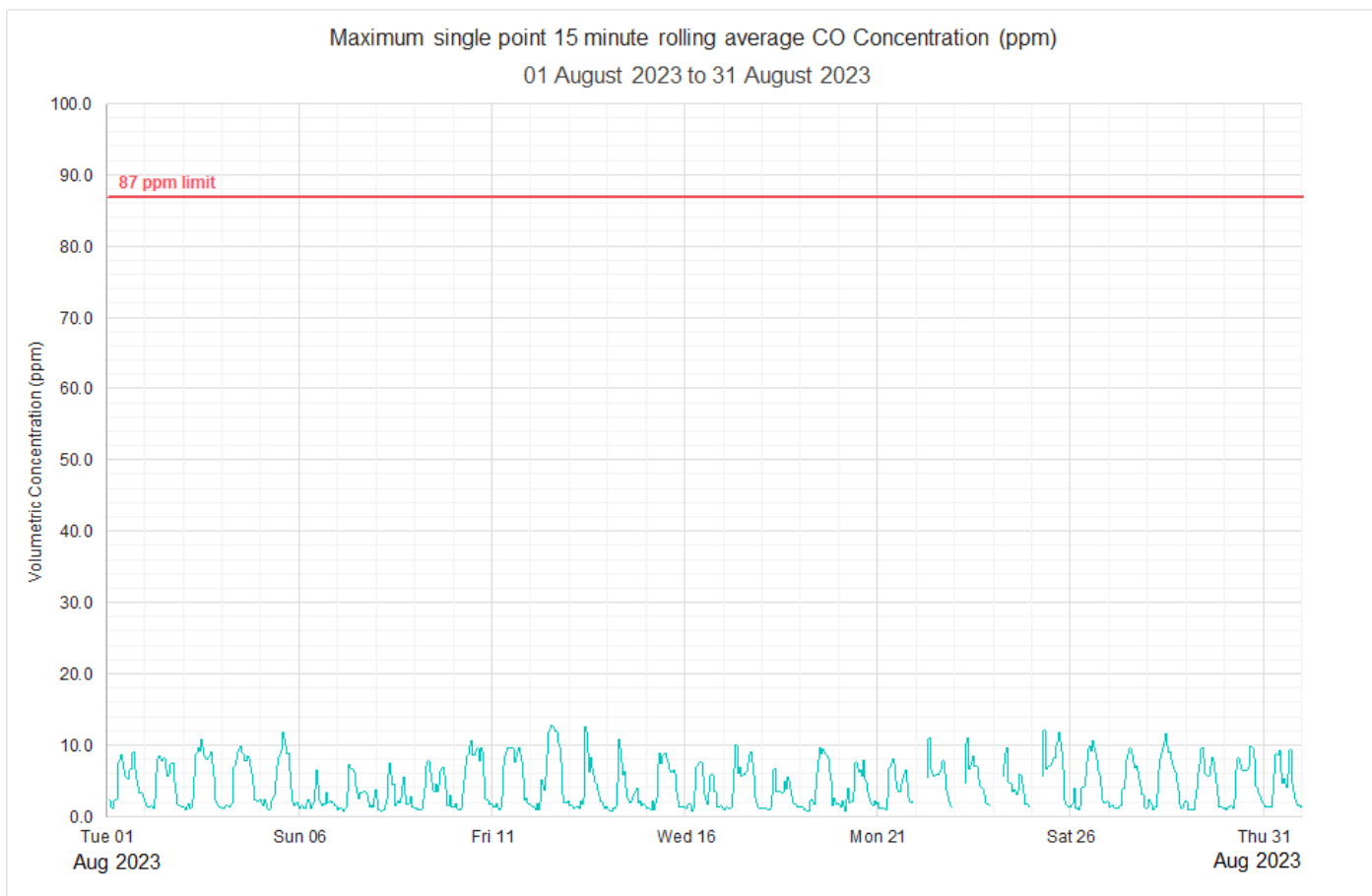


Figure 3: Monthly CO maximum hourly 15 minute rolling averages

6.3.3 Monthly CO maximum 30 minute rolling averages

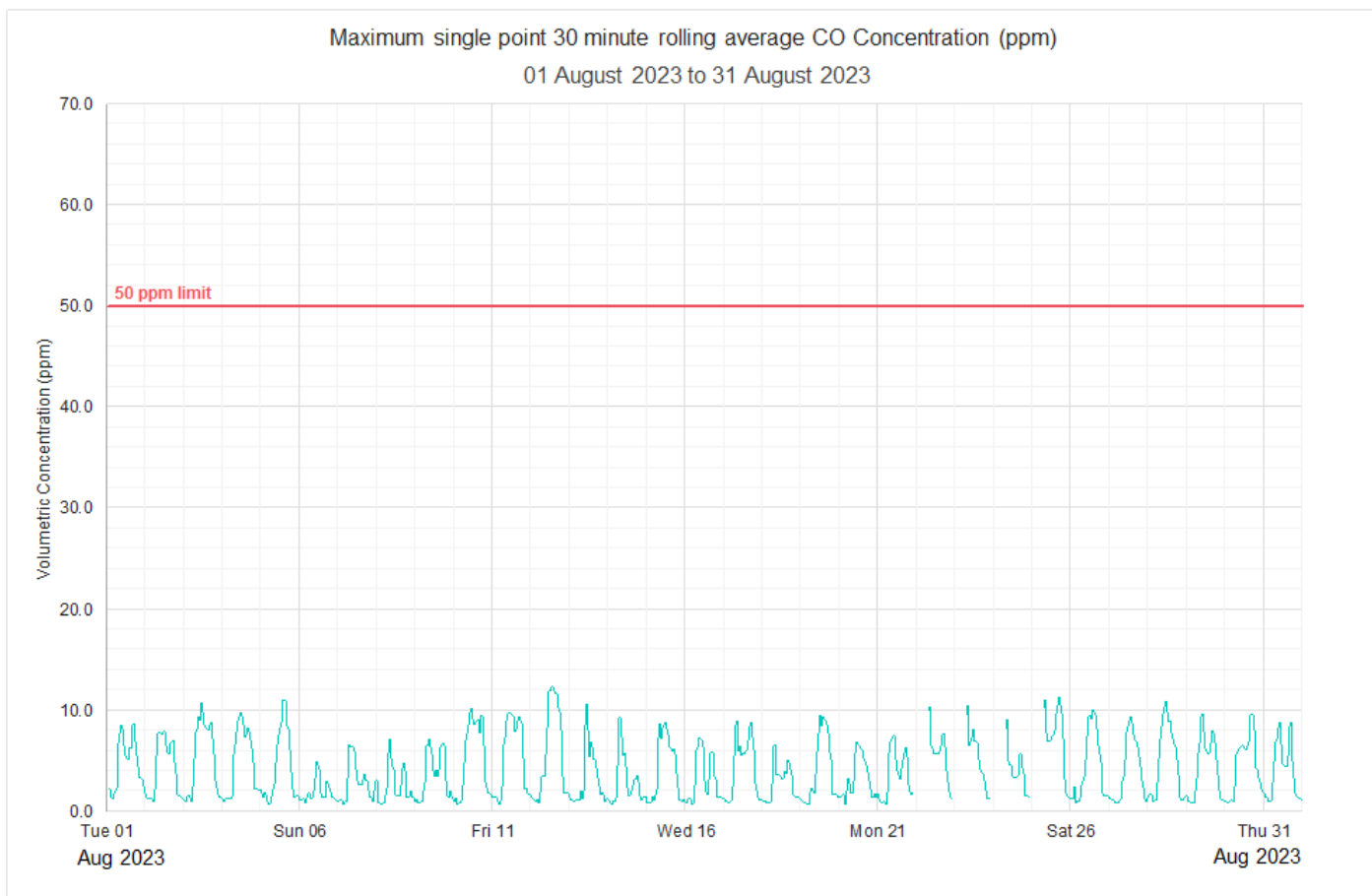


Figure 4: Monthly CO maximum hourly 30 minute rolling averages

6.3.4 Three Monthly Trend CO maximum 3 minute rolling averages

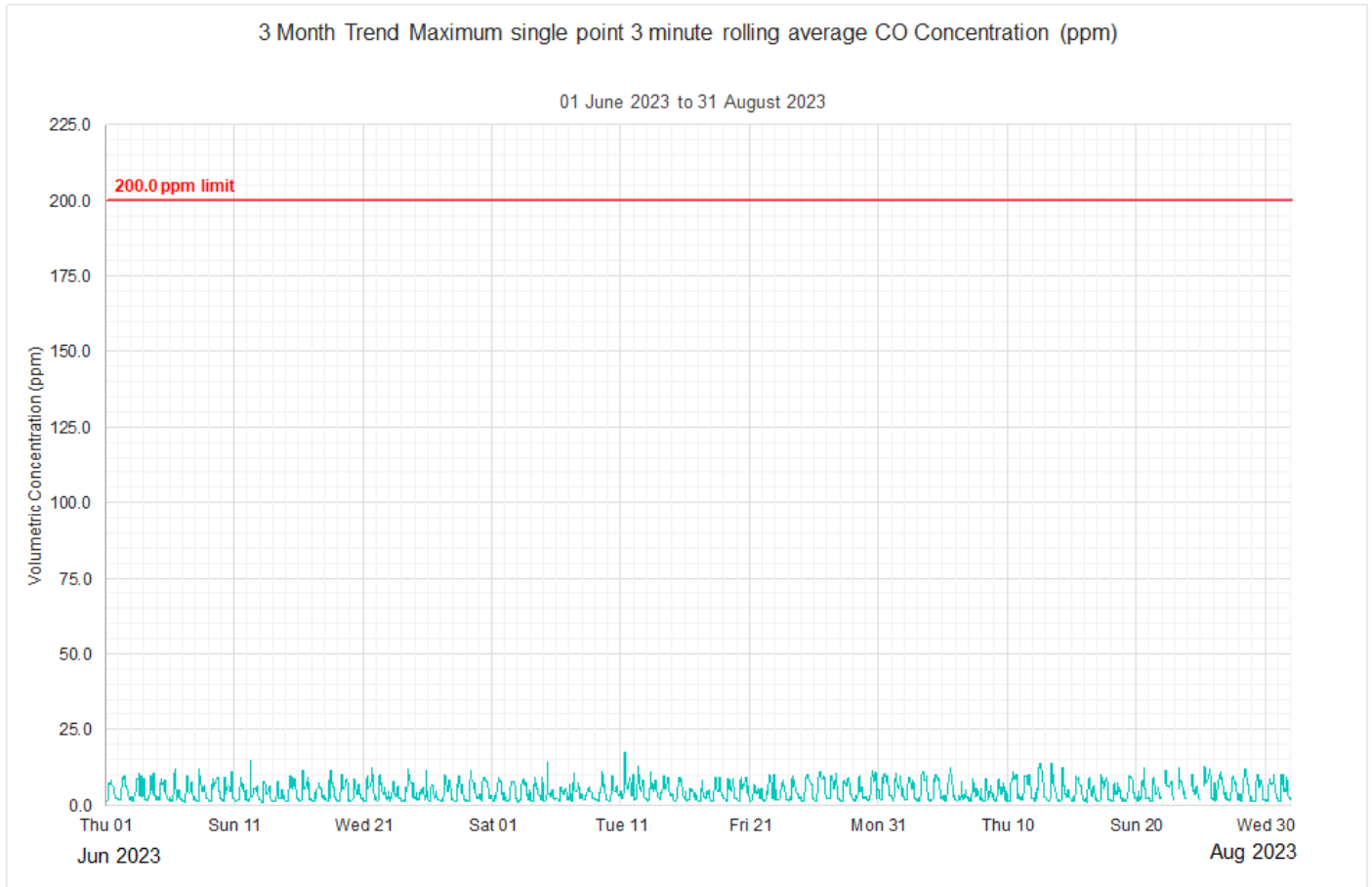


Figure 5: 3 Monthly CO maximum hourly 3 minute rolling averages

6.3.5 Three Monthly Trend CO maximum 15 minute rolling averages

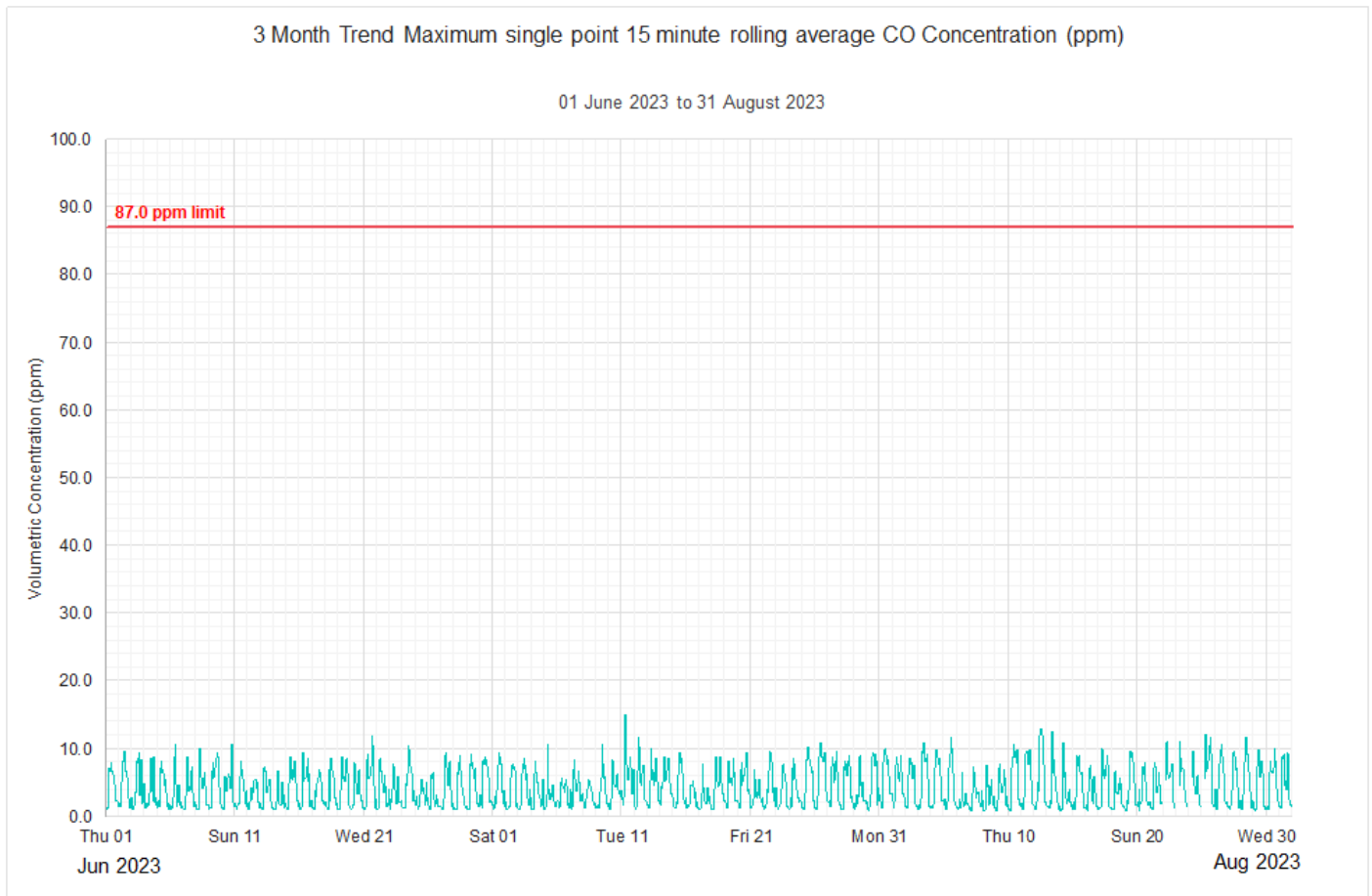


Figure 6: 3 Monthly CO maximum hourly 15 minute rolling averages

6.3.6 Three Monthly Trend CO maximum 30 minute rolling averages

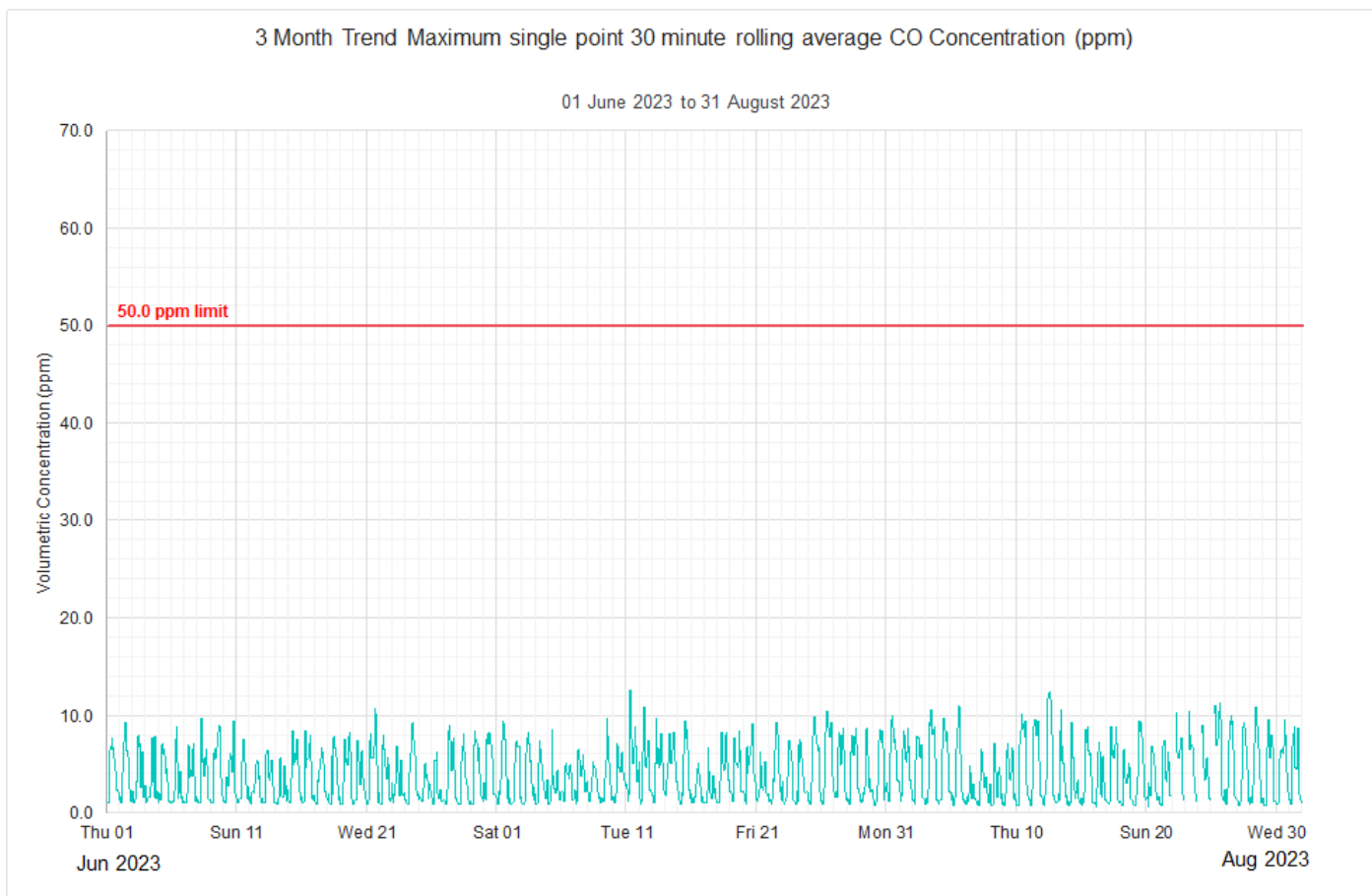


Figure 7: 3 Monthly CO maximum hourly 30 minute rolling averages

7 Glossary

The following terms and abbreviations are used in this report

CO	Carbon Monoxide
LCT	Lane Cove Tunnel
MCoA	Ministers Conditions of Approval
ppm	parts per million